

# ITCertTest



<p><b>Instant Update</b></p> <p>We are checking our exam questions all the time.</p> 	 <p><b>Security &amp; Privacy</b></p>	 <p>24/7 customer support</p>
<p><b>Free Demo Download</b></p> <p>Try before you buy, Download a free sample of any of our exam questions and answers.</p> 	<p><b>One Year Free Update</b></p> <p>Free update is available within One Year after your purchase.</p> 	

<http://www.itcerttest.com>

IT exam study guide / simulations

**Exam** : **143-085**

**Title** : Brocade Certified Fabric  
Professional Gen 5

**Vendor** : Brocade

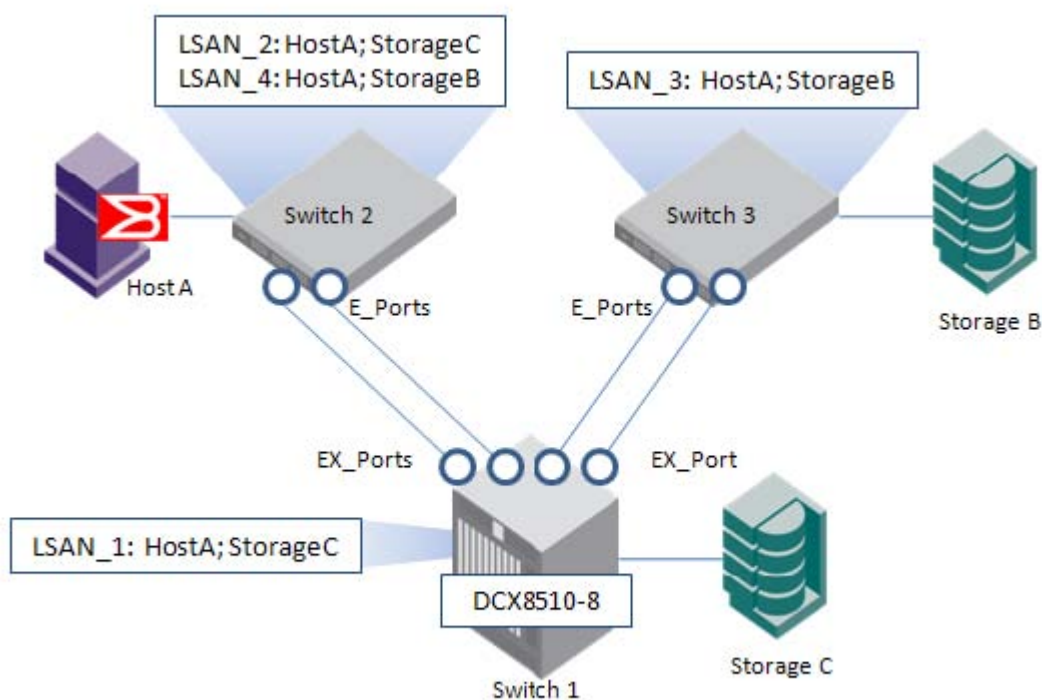
**Version** : DEMO

NO.1 You have configured the edge fabric and backbone fabric devices to communicate. Which two conditions are true? (Choose two.)

- A. The backbone fabric must not have any phantom domain for edge fabrics.
- B. The shared devices must be presented to each other's native fabric.
- C. The shared devices must be presented to the backbone fabric.
- D. At least one translate phantom domain is created in the backbone fabric.

**Answer:** B,D

NO.2 Refer to the exhibit.



In the exhibit, using all Gen 5 16 Gbps switches, how many Domain IDs will be shown in the fabricshow output on Switch 2?

- A. 2
- B. 3
- C. 4
- D. 5

**Answer:** C

NO.3 Which three protocols does the Brocade 1860 Fabric Adapter with Gen 5 Fibre Channel allow? (Choose three.)

- A. FCoE
- B. Native FC
- C. TCP/IP
- D. FCIP
- E. FICON

**Answer:** A,B,C

NO.4 You are configuring a 10 km long distance ISL between a Brocade DCX 8510 and a Brocade 5300 with no additional license.

Which two configurations are needed? (Choose two.)

- A. Configure the ISL ports at both ends for LE.
- B. Configure the ISL ports at both ends for LD.
- C. Configure the fill word to ARB on the ISL port of the 5300.
- D. Configure the fill word to ARB on the ISL ports on both ends of the ISL.

**Answer:** A,C

NO.5 You need to deploy FC-FC routing between two Gen 5 edge fabrics across an FCIP link. Each edge fabric contains a single Brocade 6520 switch. Your backbone fabric consists of two Brocade 7800 Extension Switches.

How do you enable FC-FC routing using FCIP?

- A. Configure E\_Ports between the 7800s and VE\_Ports on each edge fabric connecting to EX\_Ports in the backbone.
- B. Configure VE\_Ports between the 7800s and VE\_Ports on each edge fabric connecting to VEX\_Ports in the backbone.
- C. Configure VEX\_Ports between the 7800s and E\_Ports on each edge fabric connecting to EX\_Ports in the backbone.
- D. Configure VE\_Ports between the 7800s and E\_Ports on each edge fabric connecting to EX\_Ports in the backbone.

**Answer:** D

NO.6 Which requirement must be met to enable Access Gateway mode?

- A. Ensure the switch has an Access Gateway license installed.
- B. Ensure all Ports on Demand licenses are installed.
- C. Ensure the switch is licensed for Extended Fabric.
- D. Ensure all ports are enabled.

**Answer:** B

NO.7 You need to restrict the users who are allowed to access a new Brocade DCX 8510-8. The user credentials and passwords must be centralized and identical on all DCX 8510-8s.

Which two actions will achieve this? (Choose two.)

- A. Configure LDAP authentication on all switches
- B. Configure LDAP authentication on the Principal switch
- C. Configure RADIUS authentication on the Principal switch
- D. Configure RADIUS authentication on all switches

**Answer:** A,D

NO.8 You need to implement an FCIP solution with one 10 Gbps FCIP tunnel.

Which Brocade product will provide the solution?

- A. Brocade DCX 8510-4 with an FC6-10 blade
- B. Brocade DCX with an FX8-24 blade
- C. Brocade 7800 Extension Switch
- D. Brocade DCX 8510-8 with an FCoE10-24 blade

**Answer:** B

NO.9 You have attached a Brocade DCX 8510-8 with one ISL to a Gen 5 fabric. The DCX has merged into the fabric, but it is showing several connection errors over several hours. You decide to run the D\_Port diagnostic test on the ISL from the DCX.

What will happen when the test is run?

- A. The DCX 8510-8 will perform loopback diagnostics only to the port on its own chassis.
- B. The DCX 8510-8 will ask the user for the test parameters to use, and then run, inline diagnostics.
- C. The DCX 8510-8 will segment from the fabric and all FC communication will stop on that ISL.
- D. The DCX 8510-8 will notify the user that the D\_Port test is only supported on the F\_Port.

**Answer:** C

NO.10 You have an FC-FC routed SAN environment and have many servers booting over SAN. To ensure the routed targets are imported to a routed fabric before the host is online, what should be used?

- A. LSAN Enforce tag
- B. LSAN Speed tag
- C. LSAN Zone Binding
- D. Designated Router Port Selection

**Answer:** B